

✦ BUILDING for MINISTRY ✦

Trinity Episcopal Church

Total Proposed Capital Campaign Goal: \$4.97 million

Leadership

Clergy

Tony Buquor, *Rector*

Nicholas Morris-Kliment,
Associate Rector

Matt Kruger, *Curate*

Vestry

Tom Phillips, *Senior Warden*

Randy Hartnett, *Junior Warden*

Libby Wilson, *Clerk*

Robert Krumme, *Treasurer*

Colby Anderson

Katharine Berger

Carolyn Coffin

Linda Hossfeld

Michael Quayle

Cheryl Mandler

Greta Morgan

Chuck Niessen

Larry Scarff

Building for Ministry Committee

Randy Hartnett, *Chair*

Tony Buquor, *Rector*

Walter Birge

Buck Grace

Greta Morgan

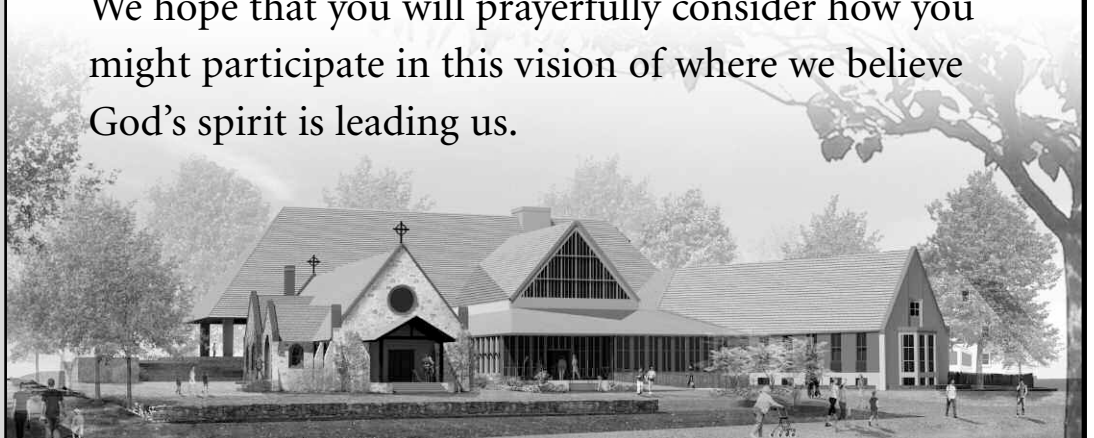
Sally Myers

Ernie Steward

For 125 years Trinity Church parishioners have responded generously to the growing needs of the parish and the community. In 2011 our parish is flourishing, but our present parish house facilities are inadequate to support our many ministries: Sunday School, choir, Bible studies, weddings, funerals, pastoral care, and meeting space for activities which sustain our faith and our works in the greater community around us.

The Building for Ministry design would address the shortcomings of our physical plant, would meet the needs of our burgeoning programs, and would provide a more welcoming space for our parish family.

We hope that you will prayerfully consider how you might participate in this vision of where we believe God's spirit is leading us.



Impediments to Our Ministries

- Trinity's Parish Hall was built in 1947 to accommodate the families attending regular Sunday services in the Trinity Chapel. Today, with over 500 active members of the church, the Parish Hall is woefully undersized to serve our needs.
- In 1951, the Parish Hall was divided and a third of the space was used to accommodate growing needs in office space for Trinity staff.
- Our Sunday School has grown from 30 registered children four years ago to 130 registered children as of September 2010. Our classrooms are currently over capacity, requiring Trinity staff and volunteers to reconfigure Undercroft space to meet the current needs.
- Due to reconfiguration of classroom space, meeting space has been overtaken leaving one dedicated room for meetings.
- There are two accessible restrooms within a reasonable distance of our Sunday parishioners—the Sunday service population averages 240 individuals at two services. Special services like weddings, funerals, or community-attended music events can draw 300–500 people.
- Clergy and staff are confined by current office space with second floor office space being handicapped-inaccessible and no office space meeting “safe church” compliance guidelines (sound proof with windows in doors).
- The energy efficiency of the building is unsatisfactory due to very poor thermal insulation in an outdated facility—Trinity Church is committed to reducing our carbon footprint while also reducing the cost to heat and cool the new Parish House Facility.
- Our existing music program facilities are inadequate for the large and active choirs we have. The space is subject to flooding and lack of sound-proofing affects use of the Parish Hall.

Building for Ministry Solutions

- The new Parish Hall would be double the size of the current space allowing for 400 individuals standing or 144 people seated at tables with a suitable kitchen to support the expanded capacity. This new lofty and inviting venue would provide Trinity the opportunity and flexibility to host many functions.
- The lower level would provide a nursery space along with nine new flexible and spacious classrooms that would connect to a new outdoor playground for Trinity's children.
- The new Parish House Facility would meet today's building code requirements for facilities and accessibility and would also comply with "safe church" requirements.
- A wide separation between the Chapel and the new Parish House Facility would expose the Chapel windows presently covered by the current lobby, introducing abundant daylight into the Chapel and new spaces.
- The Undercroft classrooms would convert to new rooms for the choir, including a music library and improved rehearsal space. Additionally, the current Nursery space would change into a new Teen Center.
- A new, cloister-like courtyard would separate the Parish Hall from the Church—providing a quiet, natural space for contemplation.
- Sustainable design principles would guide the planning of this new facility. A high-efficiency heating, ventilation, and cooling system would be utilized. The building envelope would exceed requirements of the Massachusetts "stretch" energy code newly adopted in Concord.

Estimated cost for above items: \$4.97 million

Total Proposed Goal: \$4.97 million

Additional considerations would increase this goal:

- 5% Maintenance Reserve for Future Needs: \$250,000
- Granite veneer exterior to closely match Chapel exterior: \$209,000
- Air conditioning throughout new building: \$76,000
- Site and exterior upgrades (includes increased allowances for lighting and landscaping): \$195,000
- Upgrade to general interior finish (includes increased allowances for carpeting, casework, and ceilings): \$281,000

MISSION STATEMENT

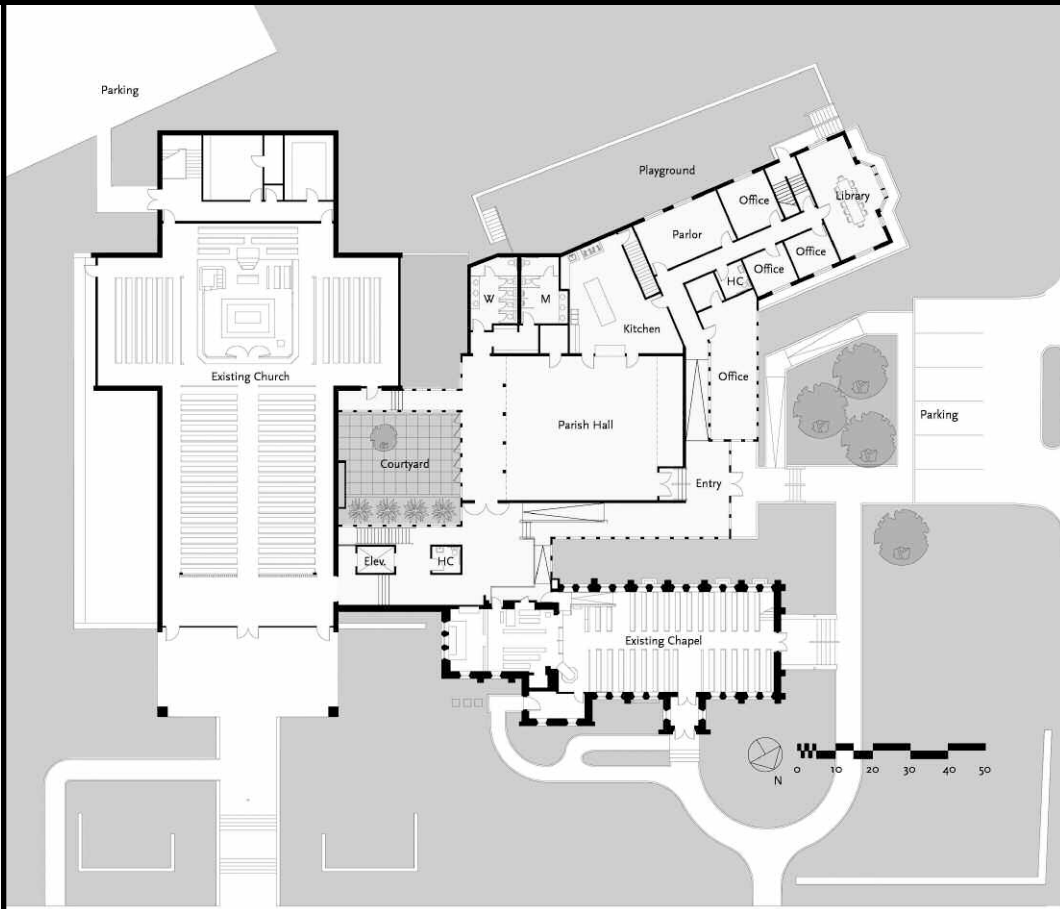
Trinity Concord is an Episcopal Church that...

Invites everyone to experience the transforming love of God through the grace of Jesus Christ and the empowerment of the Holy Spirit; Provides a nurturing environment for our children and youth to grow in their faith; Promotes diversity of thought in a safe environment for all people who seek the love of God; Values the contributions of every generation; Nurtures our spiritual growth and challenges us to grow deeper in faith while respecting each person's spiritual journey; Reaches out to others in love and service.

Gifts Essential Chart

This chart illustrates the size and number of gifts necessary for a successful \$4.97 million capital campaign.

Size of Gift	Number Needed	Cumulative Total	Monthly (Over 3 yrs.)
\$1,000,000	1	\$1,000,000	\$27,778
\$750,000	1	\$1,750,000	\$20,833
\$500,000	1	\$2,250,000	\$13,889
\$250,000	2	\$2,750,000	\$6,944
\$150,000	2	\$3,050,000	\$4,167
\$100,000	3	\$3,350,000	\$2,778
\$75,000	5	\$3,725,000	\$2,083
\$50,000	6	\$4,025,000	\$1,389
\$25,000	8	\$4,225,000	\$694
\$15,000	10	\$4,375,000	\$417
\$10,000	15	\$4,525,000	\$278
\$5,000	20	\$4,625,000	\$139
\$3,000	25	\$4,700,000	\$83
\$2,500	30	\$4,775,000	\$69
\$1,000	45	\$4,820,000	\$28
\$500	50	\$4,845,000	\$14
Less than \$500	Many	Goal Achieved	Variable



Ground level

The new Parish Hall would be double the size of the current space allowing for 400 individuals standing or 144 people seated at tables with a suitable kitchen to support the expanded capacity. This new lofty and inviting venue would provide Trinity the opportunity and flexibility to host many functions.





Basement level

The lower level would provide a nursery space along with nine new flexible and spacious classrooms that connect to a new outdoor playground for Trinity's children.